

Features:

- oil-filled asynchronous motor within stainless steel housing with thermal contact
- jacket cooling for continuous duty horizontal / emerged
- sealed with high-grade mechanical seal
- brass bearing shield
- stainless steel pump housing and motor shaft
- modern, powerful pump hydraulics with impellers and guide wheels made of wear-resistant plastic

Application:

- irrigation of home and garden and water supply from rainwater cisterns

Scope of delivery:

- pump with 20 m power cable and plug with integrated capacitor, power switch and motor protection
- floating discharge 1 1/4" with filter, tube length 1 m
- horizontal bracket with clamps



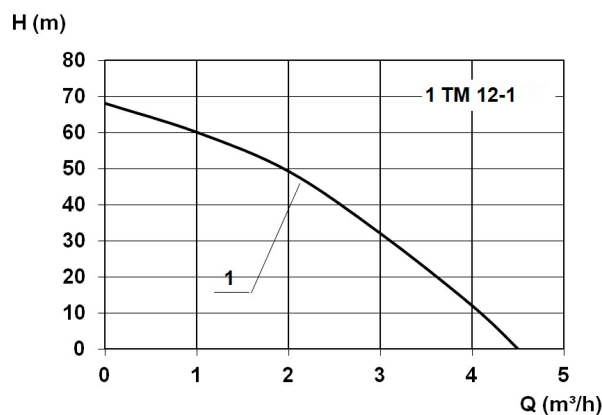
Product benefits:

- Intake of the cleanest water short beneath the water surface
- jacket cooling for continuous operation
- including stainless steel pump holder for stable, horizontal usage
- ideal for usage in cisterns, even in case of low water level

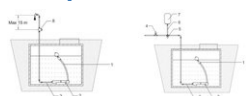
Technical data:

Art.no.	U [V]	P ₁ [W]	P ₂ [W]	I _n [A]	n [min ⁻¹]	Q _{max} [m ³ /h]	H _{max} [m]	P0	D [mm]	L [mm]	W [mm]	H [mm]	Weight [kg]
13915	230	1200	800	5,2	2850	4,5	68,0	RP1	100	100	140	625	14,2

Characteristics:



Example of installation:



Dimensions:

