

Features:

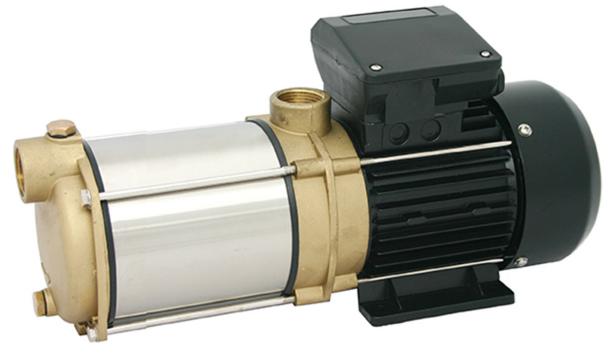
- Self-priming, maintenance-free, multi-stage, horizontal centrifugal pump
- High efficiency
- Suction and pressure connectors, internal thread (1" - 1¼")
- CPS SM with ON/OFF-switch
- CPS GG / SM: Grey-cast iron suction and discharge case
- CPS B: Suction and discharge case made of α-brass resistant to dezincification
- Impellers made of fibre-glass reinforced Noryl®

Application:

- Domestic water supply
- Rainwater utilization
- Pressure boost
- Irrigation
- For clear water without aggressive and abrasive components

Scope of delivery:

- Completely wired including mains cable H07 RNF, 1.5 m long, with plug



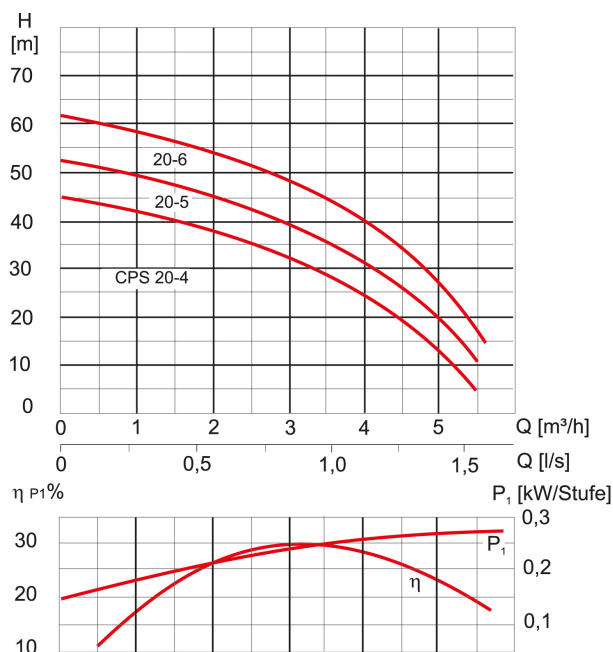
Product benefits:

- Very smooth and low-noise running
- Outstanding hydraulic capacity
- Lifetime-lubricated motor bearings
- Shaft made of stainless steel 1.4401
- High efficiency - power-saving operation
- Motor of robust industrial quality
- Self-priming up to 8 m

Technical data:

| Art.no. | U [V] | P _i [W] | I _n [A] | n [min ⁻¹] | Q _{max} [m ³ /h] | H _{max} [m] | PO | L [mm] | W [mm] | H [mm] | Weight [kg] |
|---------|----------|-----------------------|-----------------------|---------------------------|---|-------------------------|-----|-----------|-----------|-----------|----------------|
| 18595 | 230 | 1.350 | 6,1 | 2850 | 5,4 | 52,0 | RP1 | 433 | 135 | 196 | 13,4 |

Characteristics:



Materials:

| | |
|-------------------------|--------------------------|
| Material impeller: | stainless steel AISI 304 |
| Seal motor: | mechanical seal |
| Seal pump: | carbon/ceramic/Viton |
| Material motor housing: | Light metal L-2521 |
| Material pump housing: | stainless steel AISI 304 |
| Material motor shaft: | stainless steel AISI 316 |

Dimensions:

