

Features:

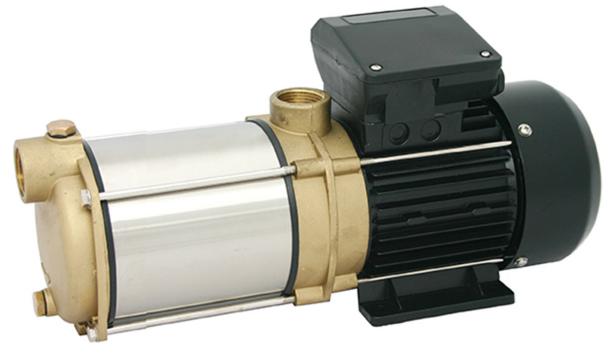
- Self-priming, maintenance-free, multi-stage, horizontal centrifugal pump
- High efficiency
- Suction and pressure connectors, internal thread (1" - 1¼")
- CPS SM with ON/OFF-switch
- CPS GG / SM: Grey-cast iron suction and discharge case
- CPS B: Suction and discharge case made of α-brass resistant to dezincification
- Impellers made of fibre-glass reinforced Noryl®

Application:

- Domestic water supply
- Rainwater utilization
- Pressure boost
- Irrigation
- For clear water without aggressive and abrasive components

Scope of delivery:

- Completely wired including mains cable H07 RNF, 1.5 m long, with plug



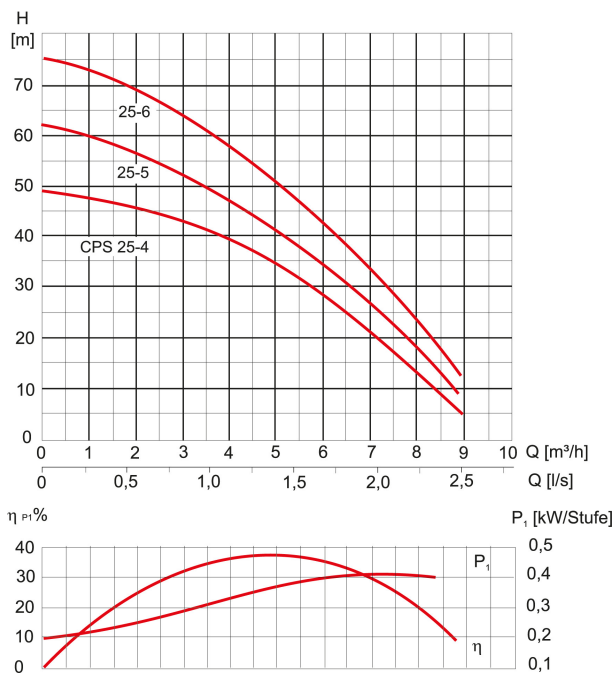
Product benefits:

- Very smooth and low-noise running
- Outstanding hydraulic capacity
- Lifetime-lubricated motor bearings
- Shaft made of stainless steel 1.4401
- High efficiency - power-saving operation
- Motor of robust industrial quality
- Self-priming up to 8 m

Technical data:

Art.no.	U [V]	P _i [W]	I _n [A]	n [min ⁻¹]	Q _{max} [m ³ /h]	H _{max} [m]	PO	L [mm]	W [mm]	H [mm]	Weight [kg]
18605	230	2.000	9,0	2850	8,7	62,0	RP1	456	154	238	19,2

Characteristics:



Materials:

Material impeller:	stainless steel AISI 304
Seal pump:	mechanical seal carbon/ceramic/Viton
Material motor housing:	Light metal L-2521
Material pump housing:	stainless steel AISI 304
Material motor shaft:	stainless steel AISI 316

Dimensions:

